

SorbaSep™ FPLC Desalting Columns

Optimize your purification and chromatography with Sorbtech's precision engineered SorbaSep™ FPLC columns. Each allows for easy packing, reproducibility, reliability, and scalability to increase productivity in your lab. Use SorbaSep™ FPLC columns to desalt, remove small molecules, and buffer exchange in standalone or automated HPLC systems—and for separating larger biomolecules from unwanted smaller molecules. Simple, rapid, and reproducible separation using a syringe, pump, or liquid chromatography system.

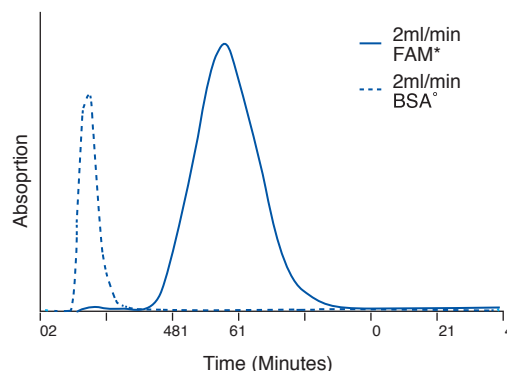
The fractionation range for globular proteins is between 1 and 5 kD. The size exclusion cut-off is approximately 5 kD, which ensures efficient separation of proteins/peptides/biomolecules larger than 5 kD from lower molecular weight molecules of less than 1 kD. SorbaSep™ desalting FPLC columns contain SorbaDex™-25 Superfine, a beaded composite size exclusion matrix. It exhibits high flow rates, excellent resolution, and chemical stability. Buffer and pH effects on resolution are minimal.

Specifications

Column Bed Size	5 ml
Size of Eluted Proteins	> 5 kD
System Compatibility	- Automated liquid chromatography systems - Perialistic Pump - Syringe
Column Dimensions	1.6 cm inner diameter x 2.5 cm height
Column Body Materials	Polypropylene
Column Ports	Inlet 10-32 (1/16") female Outlet 10-32 (1/16") male
Support	Sorbadex™-25 Superfine
Bead Size	40–110 µm (hydrated)
Maximum Back Pressure	3 bar (0.3 MPa)
Recommended Flow Rate	1 to 5 ml/min
Maximum Recommended Flow Rate	10 ml/min
Storage Temperature	ambient
Storage Solution	20 % (v/v) ethanol

High Performance Results

- Sample: 1 ml of 2 mg/ml BSA & 100 µM of in PBS pH 7.4 (0.05% NaN₃).
- Flow rate: 2 ml/min.
- Eluent: PBS pH 7.4 (0.05% NaN₃)
- Detection: Abs. at 280 nm and 490 nm



The information contained in this data sheet is believed to be a true and accurate representation of average properties obtained from current production and should not be considered guaranteed specifications. Any recommendations or suggestions are made without warranty or guarantee, since the conditions of use are beyond our control. Nothing contained herein shall be construed to imply permission, inducement, or recommendation to practice any invention or patent owned by others without authorization from the owner of the patent.

SorbaSep™ FPLC Columns

SorbaSep™ FPLC columns are designed for desalting, removing small molecules, and buffer exchange in standalone or automated HPLC systems as well as separation of larger biomolecules from unwanted smaller molecules.

Cat No.	Product	Solid Phase	Size Available	Exclusion Limit
803028	FPLC Desalting Columns	S-25SF	1 mL, 5 mL	5000 kD/10 BP
Cat No.	Product	Solid Phase	Size Available	Binding Capacity
803029	Protein A FF	SorbaRose™	1 mL, 5 mL	25 mg hlgG/mL
803030	Protein A Endure	SorbaRose™	1 mL, 5 mL	25 mg hlgG/mL
803031	Protein A HC	SorbaRose™	1 mL, 5 mL	75 mg hlgG/mL
803032	Protein G FF	SorbaRose™	1 mL, 5 mL	20 mg hlgG/mL
803033	Protein L CL	SorbaRose™	1 mL, 5 mL	10 mg hlgG/mL

The information contained in this data sheet is believed to be a true and accurate representation of average properties obtained from current production and should not be considered guaranteed specifications. Any recommendations or suggestions are made without warranty or guarantee, since the conditions of use are beyond our control. Nothing contained herein shall be construed to imply permission, inducement, or recommendation to practice any invention or patent owned by others without authorization from the owner of the patent.